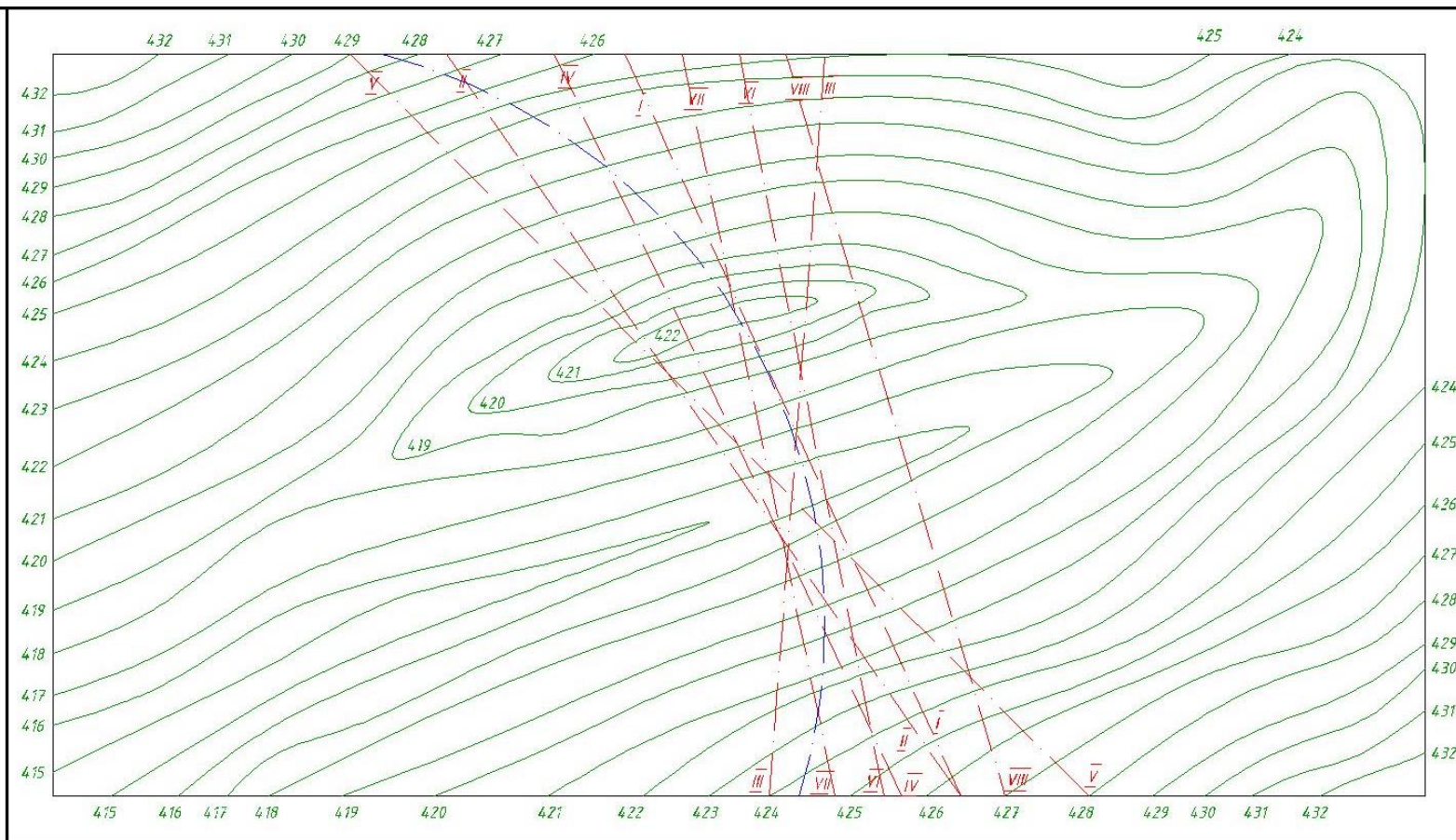


# Variant tanlanadi

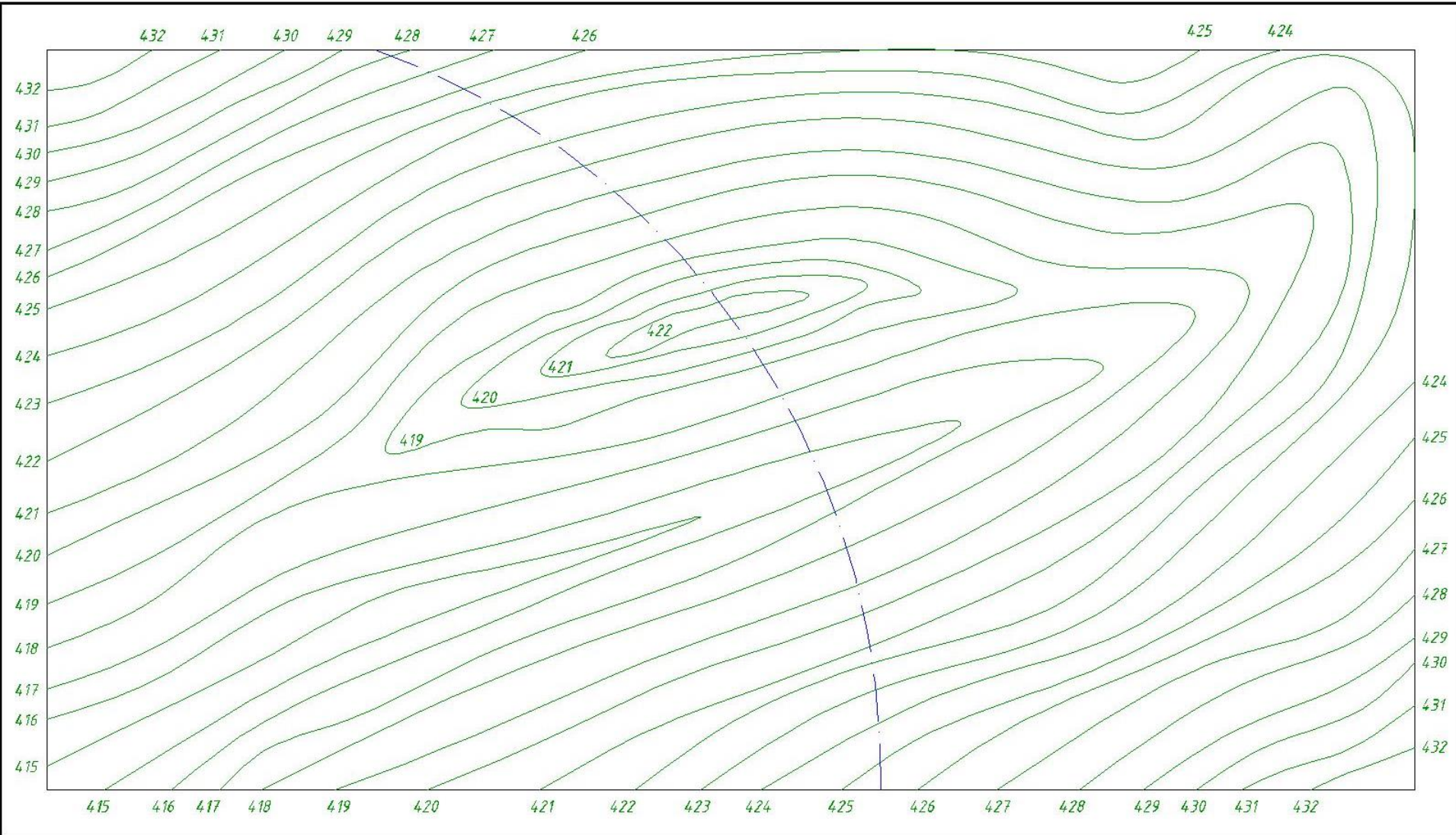


- A-damba o'qi
- B-damba yuqorisining kengligi
- C-damba yuqorisining batandligi
- D-yuqori yonbag'ir tekisligining qiyaligi
- E-qayi yonbag'ir tekisligining qiyaligi

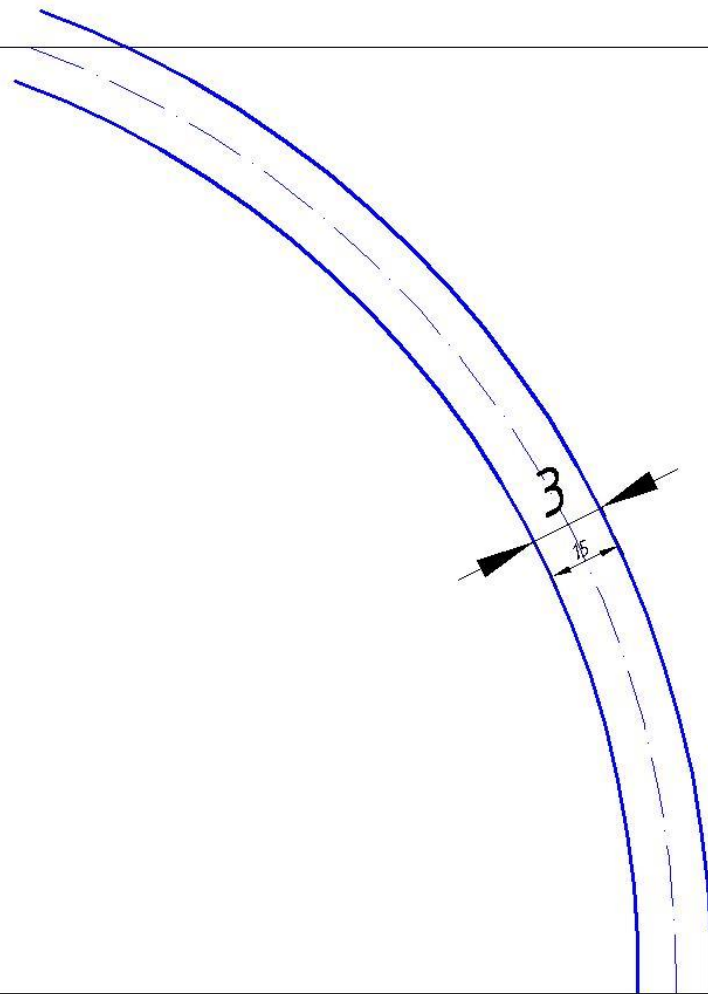
Nº	A	B	C	D	E	Nº	A	B	C	D	E	Nº	A	B	C	D	E
1	$\bar{i}$	5	4,26	1,5	2,5	11	$\bar{vi}$	4	4,27	1,5	2,0	21	$\bar{vi}$	4	4,27	1,5	3,0
2	$\bar{ii}$	3	4,25	2,0	3,0	12	$\bar{iv}$	5	4,26	1,25	2,5	22	$\bar{vii}$	3	4,25	2,0	3,0
3	$\bar{i}$	4	4,27	1,0	2,0	13	$\bar{vi}$	3	4,26	2,0	2,5	23	$\bar{i}$	5	4,25	1,5	2,5
4	$\bar{iii}$	6	4,25	2,0	2,5	14	$\bar{vii}$	6	4,27	1,5	3	24	$\bar{iv}$	6	4,27	1,5	2,0
5	$\bar{ii}$	3	4,26	1,25	3	15	$\bar{v}$	4	4,25	1,5	2,5	25	$\bar{iii}$	3	4,25	2,0	2,5
6	$\bar{vi}$	5	4,27	1,25	2,0	16	$\bar{i}$	5	4,27	1,0	2,5	26	$\bar{ii}$	5	4,27	1,0	1,5
7	$\bar{iii}$	4	4,26	1,0	2,3	17	$\bar{vii}$	4	4,26	1,5	2,0	27	$\bar{ii}$	4	4,26	1,5	2,5
8	$\bar{vii}$	6	4,27	1,5	2,0	18	$\bar{viii}$	6	4,25	2,0	2,5	28	$\bar{vii}$	3	4,27	1,5	2,5
9	$\bar{iv}$	5	4,26	2,0	3,0	19	$\bar{ii}$	3	4,27	1,5	3,0	29	$\bar{i}$	5	4,26	2,0	3,0
10	$\bar{v}$	3	4,26	1,5	2,5	20	$\bar{viii}$	5	4,26	1,0	3,0	30	$\bar{iv}$	6	4,26	2,0	2,5

Uzq	Varaq	Xujjat	Imzo	Sana	<b>GIDROTEKNIK DAMBA</b>	Lifera	Massa	Masshtab
Chizdi:	Ochilova M							1:200
Tekshirdi:	Urishev A					Varaq	Varaqlar	
"ChG va MG" kafedrasi						GTIQvaUF 1/8		

Yer gorizontallari chizilib, damba o'qi o'tkaziladi,

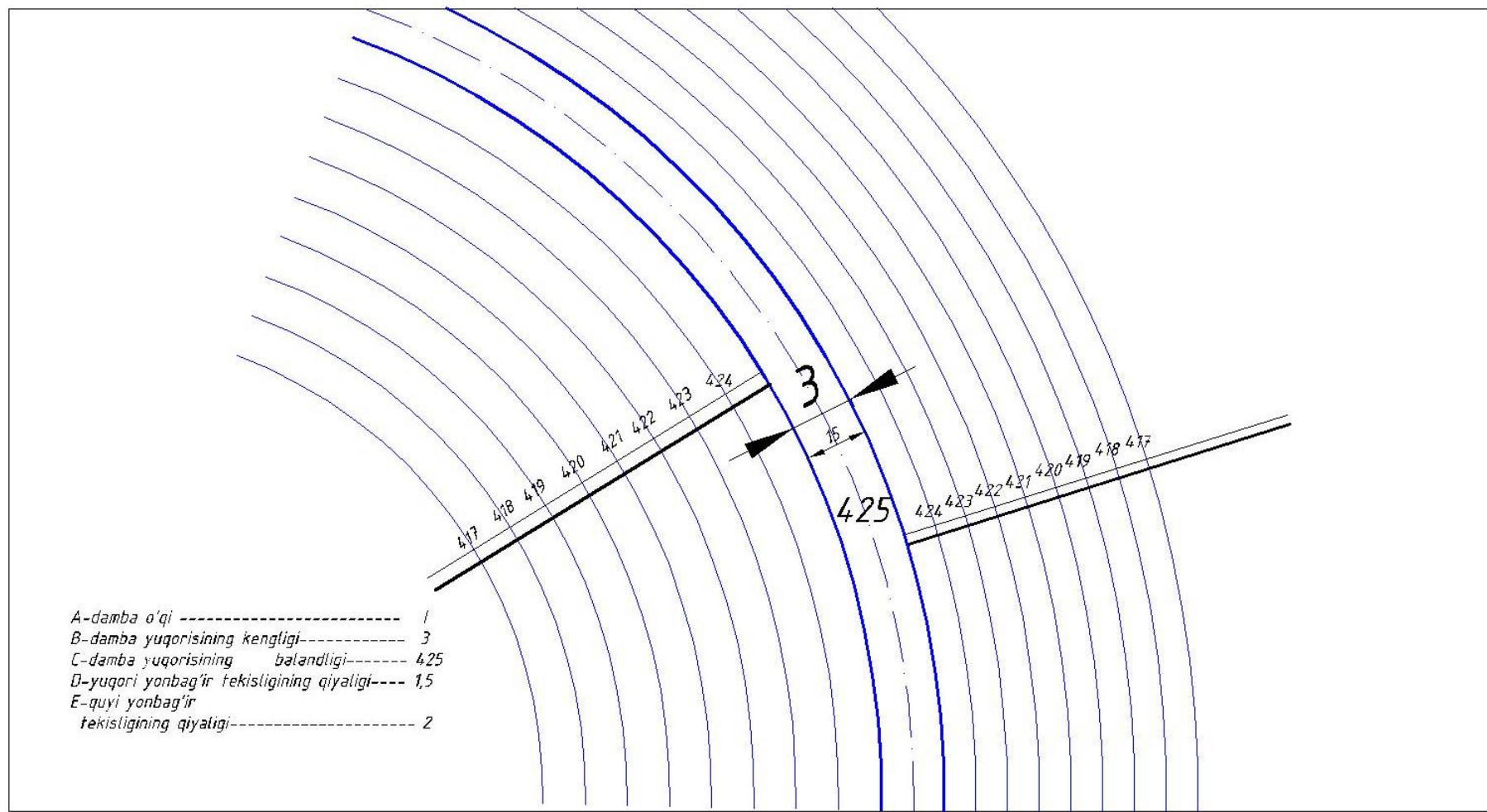


Masshtabga asosan damba yuqorisining chiziqlari o'tkaziladi.

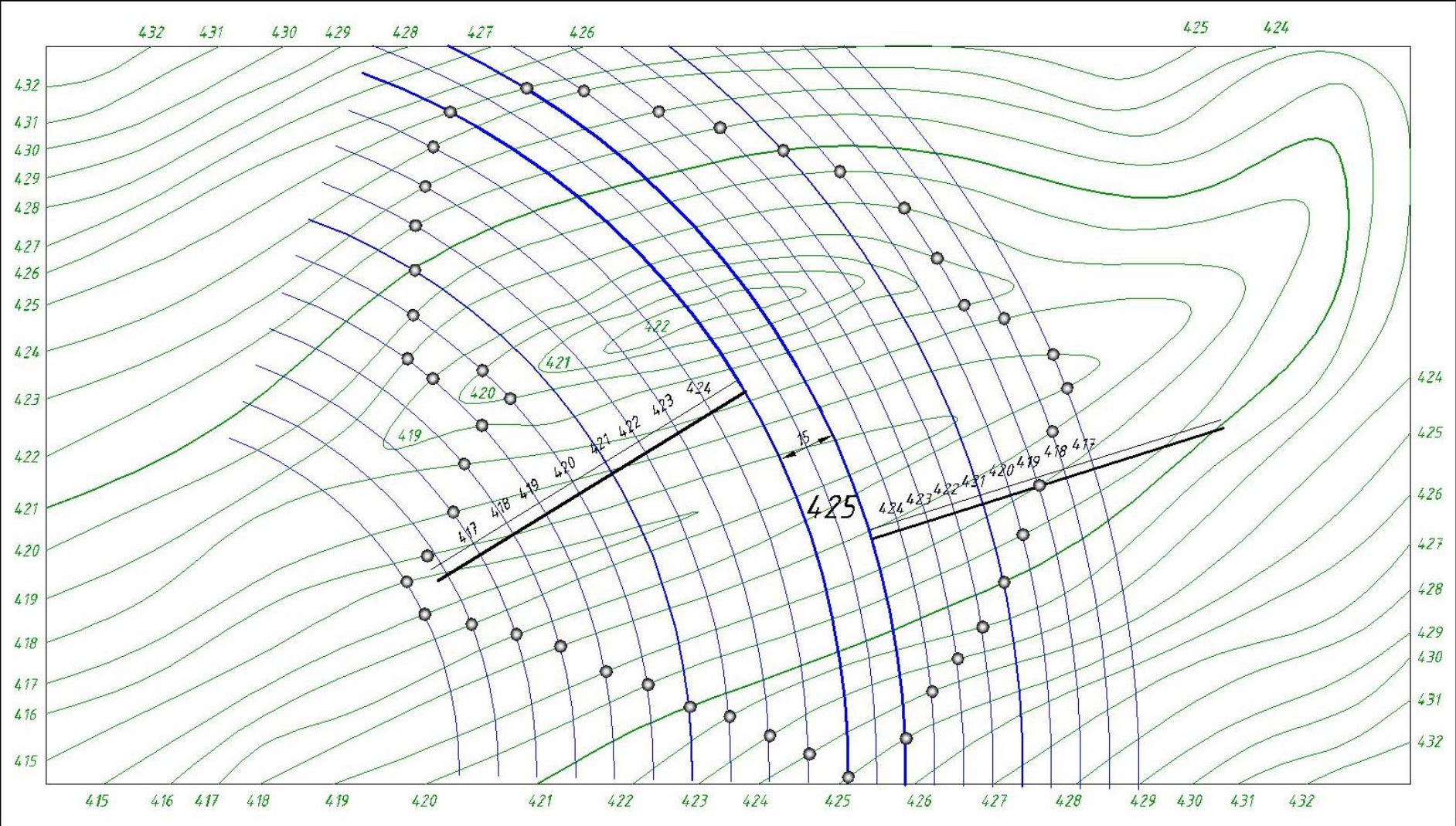




Ko'rsatilgan qiyalikka asosan yonbag'ir sirlari gorizontallari o'tkaziladi.

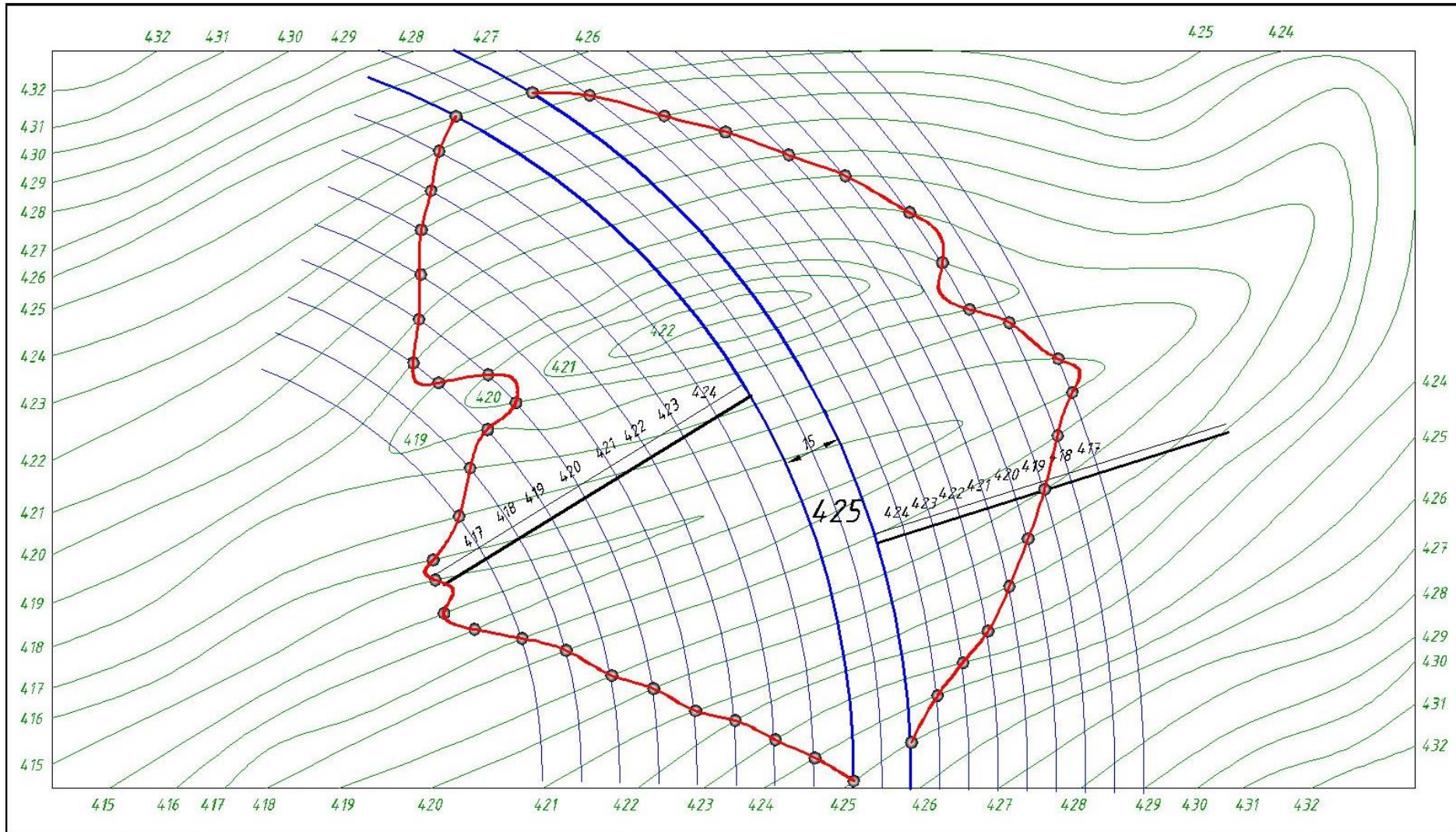


Yer va damba yonbag'ir tekisliklarining o'zaro kesishuv nuqtalari topiladi (Bir xil balandlikdagi gorizontallarning kesishuv nuqtalari).

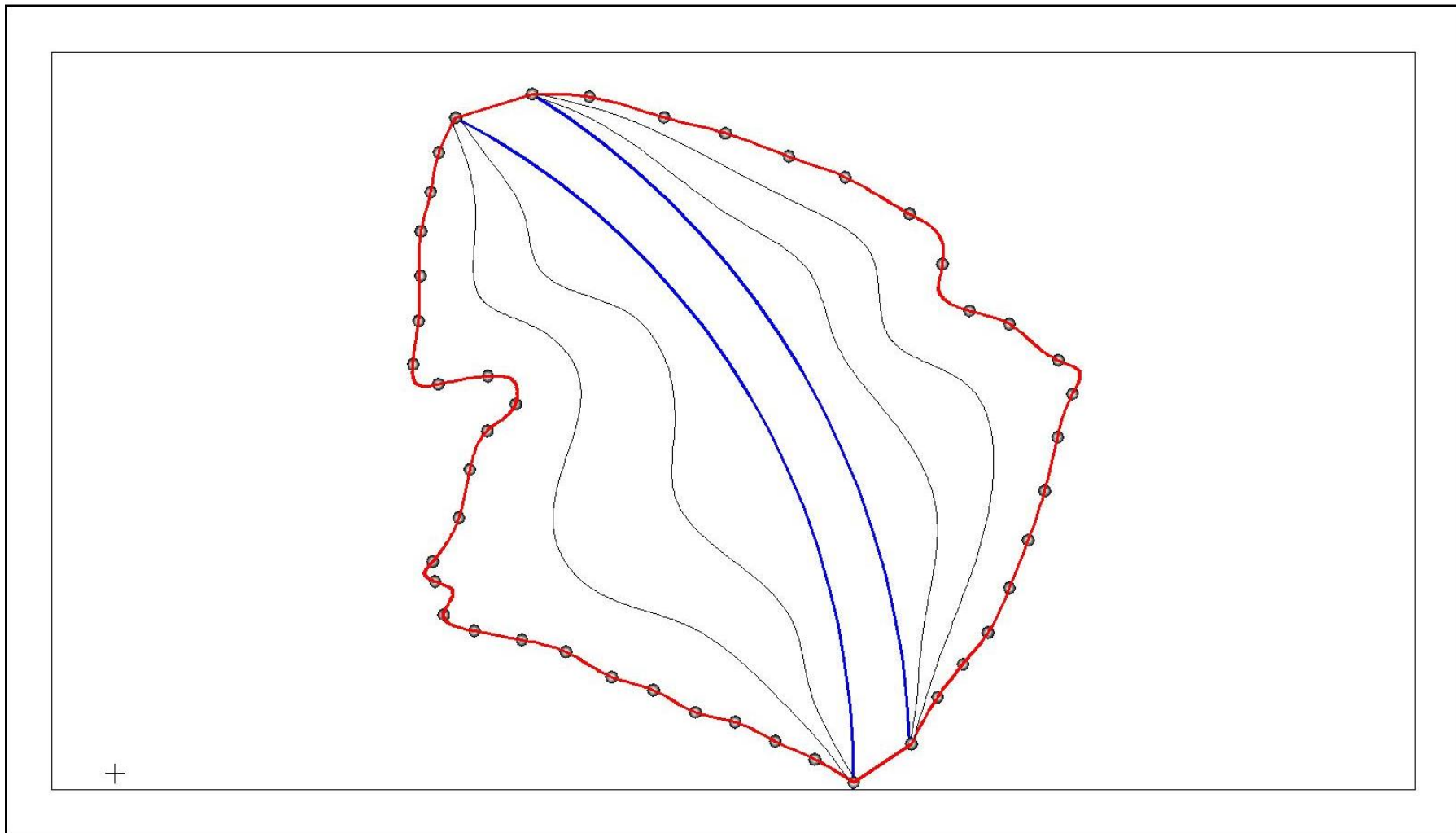




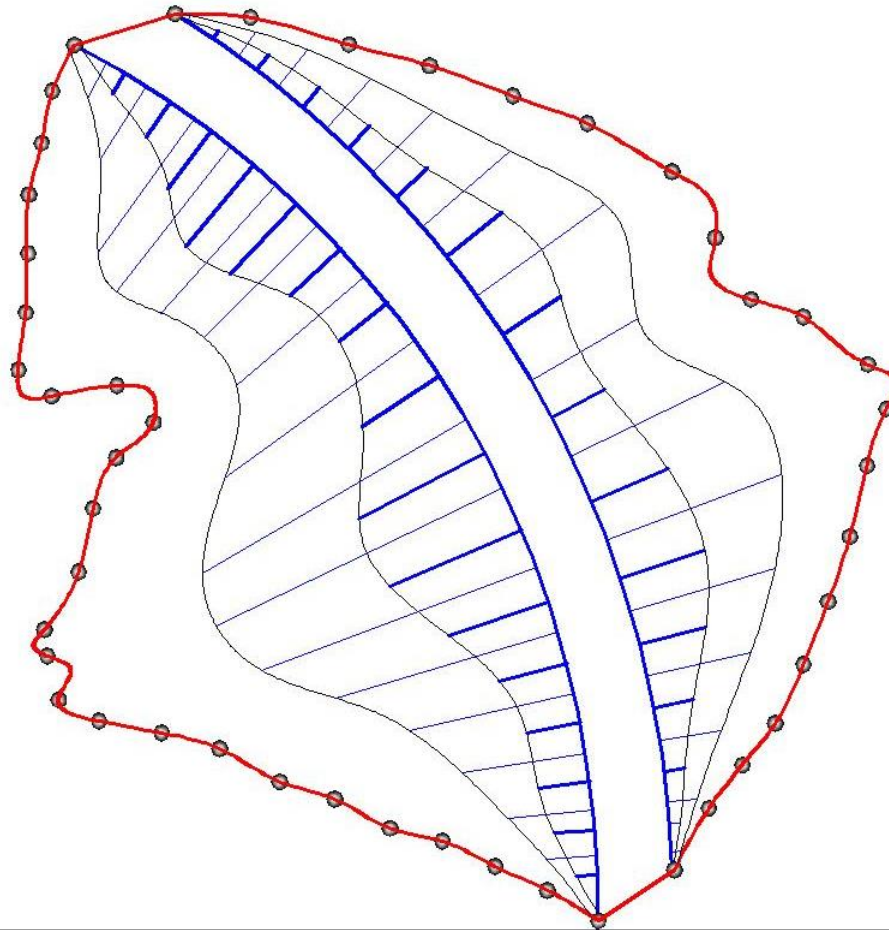
Topilgan nuqtalar o'zaro tutashtiriladi.



Bergshtrixlarni o'tkazish uchun shtrixlanadigan yuza ko'z chamalab uchga bo'linadi.



Yuqoridan quyiga qarab yo'naltirilgan holdabergshtrixlar o'tkaziladi.



+



# Topgrafik sirtdagi dambaning ko'rinishi

